



1988 Moody 346

Boat Type: Sloop

Address: Groton, CT, US

Price: \$62,900



OVERVIEW

34' Moody 346 1988

This exemplary, survey ready, 1988 Moody 346 located in Groton, CT, shows pride of ownership before you step aboard. Her fin keel is one of the most popular.

She has enjoyed numerous upgrades and preventative maintenance with an open checkbook by her current owner since 2001. She is immaculate in and out and deserves your inspection.

- 2017 New rigging (shrouds, turnbuckles, backstay); new Standard Horizon VHF w/ remote (new cable 2018); new automatic bilge pump; rebuilt manual bilge pump; new dripless shaft seal; new anchor light.

- 2016 Replaced macerator and installed the new inverter.

- 2015 New roller furling and forestay; new DC electric panel; replaced battery switches, relays and re-wired DC system (batteries); installed solar panel; replaced cabin lights with LED bulbs.

- 2014 Replaced fresh water system with PEX hose. 2013 New Charles battery charger.

Call us for your exclusive showing.

SPECIFICATIONS

Basic Information

Manufacturer:	Moody	Vessel Name:	APROPOS
Model:	346	Boat Type::	Sloop
Year:	346	Hull Material:	Fiberglass
Category:	Sail	Hull Type:	
Condition:	Used	Hull Color:	
Location:	Groton, CT, US	Designer:	
Available for sale in U.S. waters:	Yes	Flag of Registry:	

Dimensions & Weight

Length:	34 ft - 10.36 meter	Draft - max:	4 ft 11 in - 1.5 meter
LOA:	34 ft 6 in - 10.52 meter	Bridge Clearance:	-
Beam:	11 ft 4 in - 3.44 meter	Dry Weight:	11200 ft - 3413.76 meter

Engine

Make:		Engine Type:	Inboard
Model:	T80	Drive Type:	
Engine(s):	1	Fuel Type:	Diesel
Hours:	3080	Horsepower:	32 (Individual), 32 (combined)
Cruise Speed:	7 MPH	Max Speed:	-
Range:	-	Joystick Control:	No

Tank Capacities

Fuel Tank:	30 gallons - 1 tank(s)	Holding Tank:	18 gallons - 1 tank(s)
Fresh Water Tank:	60 gallons - 2 tank(s)		

Accommodations

Total Cabins:	2	Crew Cabins:	1
Total Berths:	-	Crew Berths:	1
Total Sleeps:	1	Crew Sleeps:	1
Total Heads:	1	Crew Heads:	1
Captains Cabin:	-		

DESCRIPTIONS

Instruments

- Furuno Navnet 3D Radar/Chartplotter (8" display)
- Raymarine Autopilot
- Tack Tick wireless anemometer
- iCOM MXA5000 AIS receiver
- Stowe knot meter
- Autohelm depth sounder
- Ganz GPS-30 Semi-flexible solar charger
- Batteries (series 31) 5 Rolls 30H/12rs125 (slightly larger than group 27)
- Samsung flat panel TV

Deck

- 4 Lewmar ST winches in cockpit, 3 on mast
- Main Sail with Dutchman system (Kappa Sails)
- Sail Cover
- 150% Genoa (Kappa Sails)
- Shaffer furling system
- Garhaur main sail line control traveler
- Dodger, Bimini with full enclosure and pedestal cover.
- Lofrans electric windlass with 125' BBB chain and 35 lb. CQR anchor
- Cockpit cushions
- Dingy Davits

Accommodations

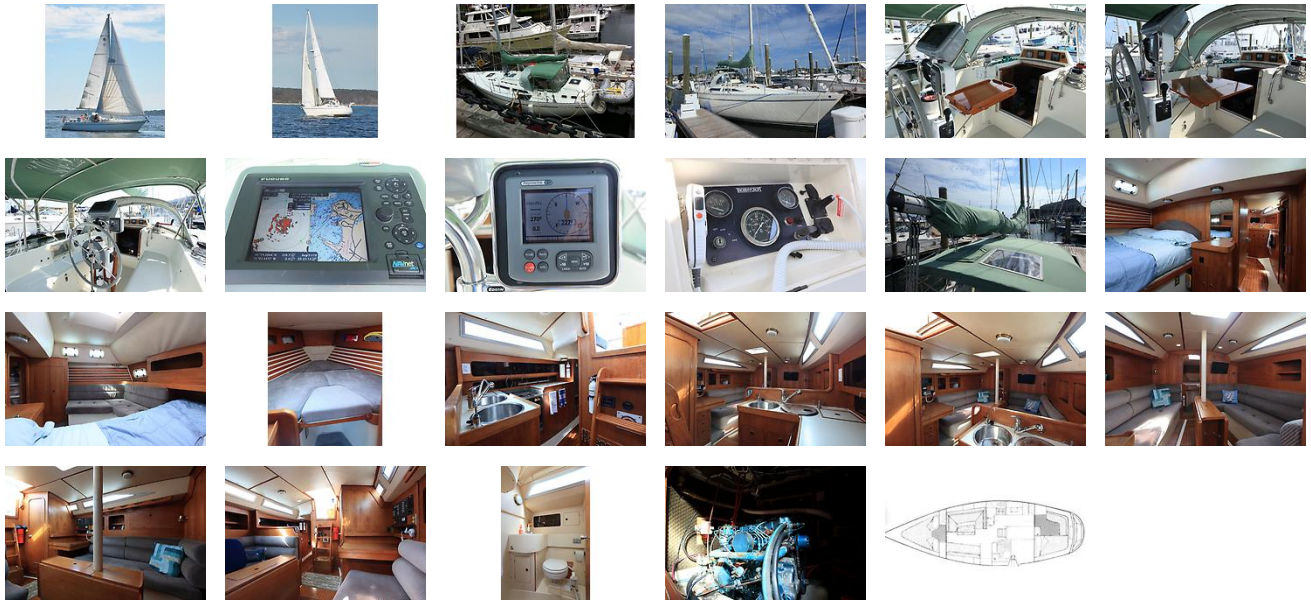
- Aft main cabin (sleeps 2) with vanity, bench and storage (custom mattress and sheets)
- Forward V-berth (sleeps 2)
- Manual head
- H/C Shower
- Refrigeration
- 2 burner stove w/oven
- Double SS sinks
- Fold up dining table with storage
- Seating for 6-8 on main salon settees

Brokers Comments

She is truly a fine vessel with lots of caring and upgrades. One of the most well-cared-for sailing vessels I've been aboard. Pride of ownership is most evident throughout.

Ready for your showing.

GALLERY



LOCATION MAP



CAPTAIN JOHN HOTTE
 Manatee Pocket Yacht Sales
 Niantic, CT
 Niantic, CT, US
 Office: 860-460-1311
 Mobile: 860-460-1311
John@manateepocketyachtsales.com

